

## **SCHOTT fiber optical and LED lighting solutions for the healthcare industry**

### **New SCHOTT® IllumaMed LED light source in different colors to be introduced at MEDTEC by Moritex**

*Mainz (Germany) & Tokyo (Japan), April 24, 2013* – The international technology group SCHOTT, represented in Japan by its sister company and illumination expert MORITEX, is launching its new SCHOTT® IllumaMed LED light source at MEDTEC Japan trade show in Tokyo at booth number 716. The new LED light source is now being serially manufactured in different colors for use in SCHOTT® IllumaMed lighting solutions for the medical industry.

The new SCHOTT® IllumaMed light source is a small, extremely efficient LED source developed especially for use with fiber optic SCHOTT® IllumaMed sidelight components. The LED light source is predestined for applications that call for extremely high light output yet offer only very limited installation space. This light source is serially manufactured in the versions RGB, only red, only green, only blue and red/green.

The **contour lighting SCHOTT® IllumaMed** consists of both flexible and rigid fiber optic light guides that emit light along the sides and receive their light from LED sources. These sidelights are ideally suited for use in ambient lighting as well as functional lighting of buildings or devices. In hospitals and practices, for example, they can be used for optical signal amplification and to produce mood lighting effects.

**SCHOTT AG**  
Hattenbergstrasse 10  
55122 Mainz  
Germany  
Phone +49 (0)6131/66-2411  
E-mail [info.cpr@schott.com](mailto:info.cpr@schott.com)  
Internet [www.schott.com](http://www.schott.com)

Surgical equipment, including tables, swivel arms, lights and supplies, can also be fitted with flexible contour lighting in various colors, for example. These thin fiber optic light guides are electromagnetically compatible and therefore function even inside a magnetic resonance tomography system where they are able to help calm down and preoccupy patients.

**Technical data of the SCHOTT® IllumaMed light source:**

Max. LED current	700 mA continuous mode or via PWM-signal*
Max. power consumption	6 W
Typical LED lifetime	50.000 h
Dimensions	99 mm x 40 mm x 23 mm
Max. weight	< 60 g

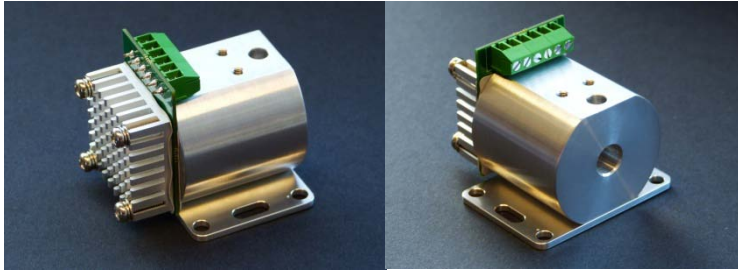
More information can be found here:

<http://www.schott.com/lightingimaging/english/medical/medical-applications/ambient-illumination.html>

*SCHOTT is an international technology group with more than 125 years of experience in the areas of specialty glasses and materials and advanced technologies. SCHOTT ranks number one in the world with many of its products. Its core markets are the household appliance, pharmaceuticals, electronics, optics, solar power, transportation and architecture industries. The company is strongly committed to contributing to its customers' success and making SCHOTT an important part of people's lives with its high-quality products and intelligent solutions. SCHOTT is committed to managing its business in a sustainable manner and supporting its employees, society and the environment. The SCHOTT Group maintains close proximity to its customers with manufacturing and sales units in 35 different countries. Its workforce of around 16,000 employees generated worldwide sales of approximately 2 billion euros for the 2011/2012 fiscal year. SCHOTT AG, with its headquarters in Mainz, Germany, is owned by the Carl Zeiss Foundation.*

**SCHOTT Lighting and Imaging**, a Business Unit of SCHOTT AG, has been active in the area of cabin lighting for 20 years. Today, its product portfolio includes basic illumination, ambient scenario and seat lighting solutions such as seat-integrated reading lights. In Japan, SCHOTT Lighting and Imaging operates through its sister company **MORITEX** of which it holds 71.6% of the shares. Moritex Corporation is listed on the first section of the Tokyo Stock Exchange (TOKYO:7714, TSE).

**SCHOTT AG**  
Hattenbergstrasse 10  
55122 Mainz  
Germany  
Phone +49 (0)6131/66-2411  
E-mail [info.cpr@schott.com](mailto:info.cpr@schott.com)  
Internet [www.schott.com](http://www.schott.com)



The new SCHOTT® IllumaMed light source is a small, extremely efficient LED source developed especially for use with fibre optic SCHOTT® IllumaMed sidelight components. This light source is serially manufactured in the versions RGB, only red, only green, only blue and red/green. Photos: SCHOTT.



Regardless of whether it's reading lights, contour lighting or complete illumination scenarios, light can create moods, instill comfort and provide a sense of orientation in hospitals. SCHOTT helps medical institutions to find exactly the right lighting approach that meets their needs. Photos: SCHOTT

Download link to these photographs in print quality:

<http://www.schott-pictures.net/presskit/200141.medtec-japan-2013>

Press photographs are available for downloading here:

[www.schott-pictures.net](http://www.schott-pictures.net)

**Sales Contact:**

Moritex Corporation  
Medical Sales Group  
Phone: +81-(0)3-6367-3633  
Fax: +81-(0)3-3590-6629  
From May 1, 2013:  
Phone: +81-(0)48-218-2539  
Fax: +81-(0)48-462-6714

**Media Contact:**

SCHOTT AG  
Corporate Public Relations  
Dr. Haike Frank  
Hattenbergstrasse 10, 55122 Mainz, Germany  
Phone: +49 (0)6131 / 66-4088  
e-mail: [haike.frank@schott.com](mailto:haike.frank@schott.com)  
Internet: [www.schott.com](http://www.schott.com)

**SCHOTT AG**

Hattenbergstrasse 10  
55122 Mainz  
Germany  
Phone +49 (0)6131/66-2411  
E-mail [info.cpr@schott.com](mailto:info.cpr@schott.com)  
Internet [www.schott.com](http://www.schott.com)